



VLUCHTELINGENWERK

VLAANDEREN

OFFICE PLACE FOR RENT

KRUIDTUINSTRAAT 75 1210 SINT-JOOST-TEN-NODE

RENTING OUT PART OF THE VLUCHTELINGENWERK PREMISES

From March 2013, Vluchtelingenwerk Vlaanderen moved to new premises. Together with three other NGO's (both French and Flemish speaking), it acquired a building of +2000 m2, extremely well located, right next to metro and tram lines and the cultural temple "Botanique", and within walking distance from both Brussels North and Central station.

The building dates from the sixties, has undergone extensive renovation towards the end of the nineties with respect for state of the art standards of those days and has been adapted to the needs of the different owners. It offers a comfort similar to contemporary private sector offices.

Vluchtelingenwerk Vlaanderen owns the entire first floor and rents out a part of their premises.

WHAT WE OFFER

- 120m2 (excluding all shared facilities and corridors)
- 18 available desks (three islands of 4 desks, one island of 6 desks) in an open space concept
- 2 individual rooms (for 2 separate desks, or 2 quiet working spaces or small private meetings)
- access to two telephone boxes used for longer phone calls (high acoustic isolation standards)
- isolated double glass
- acoustically isolation ceilings
- decent sanitary facilities
- a shared kitchenette

The renting system is the concept of a service centre, which means that 'the rent' is subject to VAT.

We offer you not only rent, but also access to meeting rooms, reception, cleaning, catering,... Depending on the agreed conditions, the basic price will then be mutually agreed.

WHAT'S INCLUDED?

- Desks, closets, chairs.
- Cleaning services
- Access to sanitary facilities, equipment included
- Shared cloak room on 1st floor
- Access to shared meeting facilities for internal meetings through an building based reservation system
- Access to the shared cafeteria on the third floor
- Access to Vluchtelingenwerk Vlaanderens parking places on basis of a gentlemen's agreement

- General building reception (ground floor)
- Mentioning of the renter's name and logo on main entrance, elevators and access doors
- Coffee and tea within the office premises
- Access to the kitchenette on the first or fourth floor
- Office/building maintenance and water and energy consumption
- Magnetic badge access, security and alarm system, access 24/7. Individual programming of badges by general reception services

OPTIONAL

- Telephony to be negotiated
- Incoming snail mail distribution
- If relevant and after check of compatibility of systems: access to network, wifi and printing facilities

WHAT'S NOT INCLUDED?

- Outgoing phone calls (based on Proximus bill)
- Telephone reception desk by Vluchtelingenwerk Vlaanderen/SAW B
- Organisational management support (bookkeeping, payroll, legal obligations,...)
- Catering service

RENTAL CHARGES (TO BE DISCUSSED)

Price included variants : 7500 euro/month (VAT excluded)

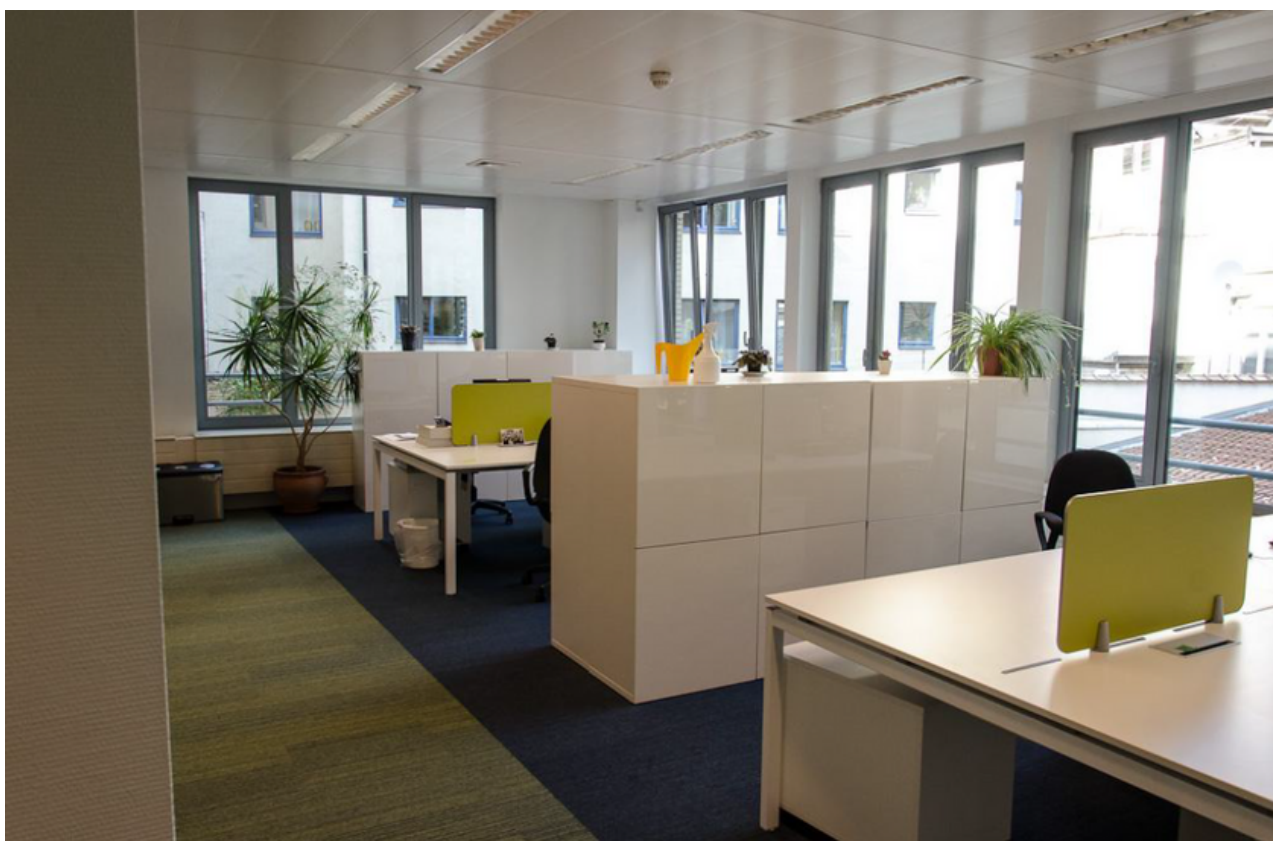
(It can be mutually agreed to rent only part of the space.)

CONTACT

Contact us at info@vluchtelingenwerk.be or 02 225 44 19

FOR RENT BY VLUCHTELINGENWERK VLAANDEREN

3 ISLANDS OF 4 DESKS



TWO INDIVIDUAL ROOMS



PREMISES SHARED WITH VLUCHTELINGENWERK VLAANDEREN

KITCHENETTE

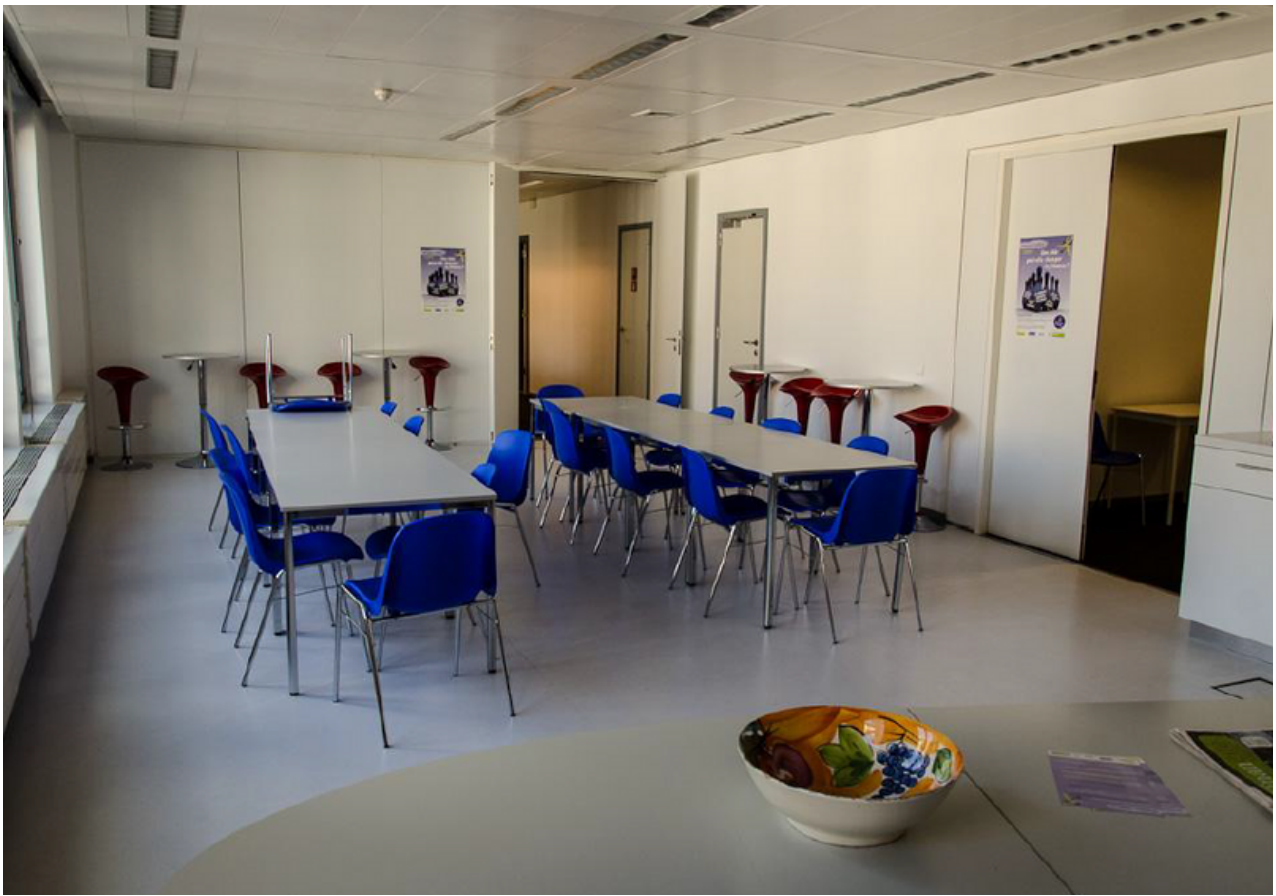


BUILDING BOTA 75: SHARED FACILITIES

FRONT DESK (GROUND FLOOR)



CAFETARIA



TWO LARGE MEETING ROOMS SEPARATED BY ONE MOBILE WALL



MEETING ROOM: 'OSTROM'



PARKING PLACES



THE BUILDING ITSELF

